



**COMPANY**

**PROFILE**

**2026**



# CONTENTS

**INTRODUCTION**

**4**

**WHY**

**6**

**HOW**

**12**

**WHAT**

**26**

**WHO**

**36**



# INTRODUCTION

**KH3 Group Limited** is a part of the joint venture **Razor.KH3 Limited** initiative set-up by Kweku Hayford and Ernest Larmie to set new standards in business and the execution of construction projects.

In the last decade Kweku and Ernest have built their respective companies (KH3 Group Limited and Razor Engineering and Construction) into successful construction management companies with expertise in Full Service Design and Build, General Contractor Services, Maintenance as well as the supply and installation of Furniture and Soft Flooring.

In 2019 they brought the two powerhouses together to build synergies, neutralise their weaknesses and magnify their strengths. This partnership combines KH3's unrivalled client engagement competencies, strategic planning and project design and finishing with Razor's superior Project & Construction Management as well as Maintenance competencies.

It allows us to provide holistic construction services to our clients as we strive to achieve our vision **to be the Standard of Global Business Excellence in Africa.**

Our influence and network in the industry enables us identify and resolve project challenges in ways you do not expect from your contractor. From helping you scope your project to convincing your building manager to approve your proposals we help your project in conventional and unconventional ways.

While we prefer to assist our clients at the inception of their projects, we offer various services to our clients at various points in their projects.



...we will be the  
standard of  
Global Business  
**E**xcellence in  
Africa

## WHY

Some call it Reason, others call it Purpose often it is called your **VISION**. For us, it is the reason we get out of bed every morning. We call it our Why. It is driven by a value system (Our Core Values) that drives the purpose of our daily engagements ( Our Mission). This is **OUR WHY...**



out of the  
ordinary, the  
**E**xtraordinary  
that inspires the  
world.

## WHY

Some say our **VISION** is lofty. Impossible! We believe impossible is easy. It is easy because we are a family of ordinary people who are developing ourselves into beautiful people by creating beautiful things & environments through a beautiful inspiring stakeholder experience. Out of these ordinary people inspiring extraordinary, beauty is created. We call this our **MISSION:**



# WHY

## **BEAUTY.**

We treat all stakeholders with diplomacy, dignity, and civility in line with the outward beauty of our environment and the environments we create.

## **INNOVATION.**

We challenge the status quo. We seek better, smarter, and more beautiful ways to solve problems and deliver value. When ideas fall short, we learn, adapt, and try again—never settling, always evolving.

## **LOYALTY.**

We are faithful to our mission and vision and that of our stakeholders and the organisations they represent.

## **DILIGENCE.**

We give our utmost attention to all our projects. We do this in earnest and with precision.

## **EXCELLENCE**

We are committed to delivering exceptional results in every area of our operations.

## **RESILIENCE**

We learn from any challenges and setbacks and document lessons learned. We persist in pursuit of goals, targets, and deadlines, all with focused optimism.

## **STUDIOUSNESS**

We are committed to learning and advancing our services, products, and tools to best serve our stakeholders.

We are committed to delivering exceptional results in every area of our operations. Paying painstaking attention to every detail to ensure we create beautiful spaces through a beautiful client experience. We do this by living out our **CORE VALUES.**



▶ koko  
◀ fufu  
◀ washroom

# HOW

In our drive to deliver an excellent experience to our stakeholders, we have integrated key products and services within our supply chain into KH3. These key products and services include, Architectural & Engineering Design, Soft Flooring, Furniture, Joinery and Maintenance. The companies that provide these key products and services are subsidiaries of KH3 and that our partly owned by Executive Team Members of KH3.

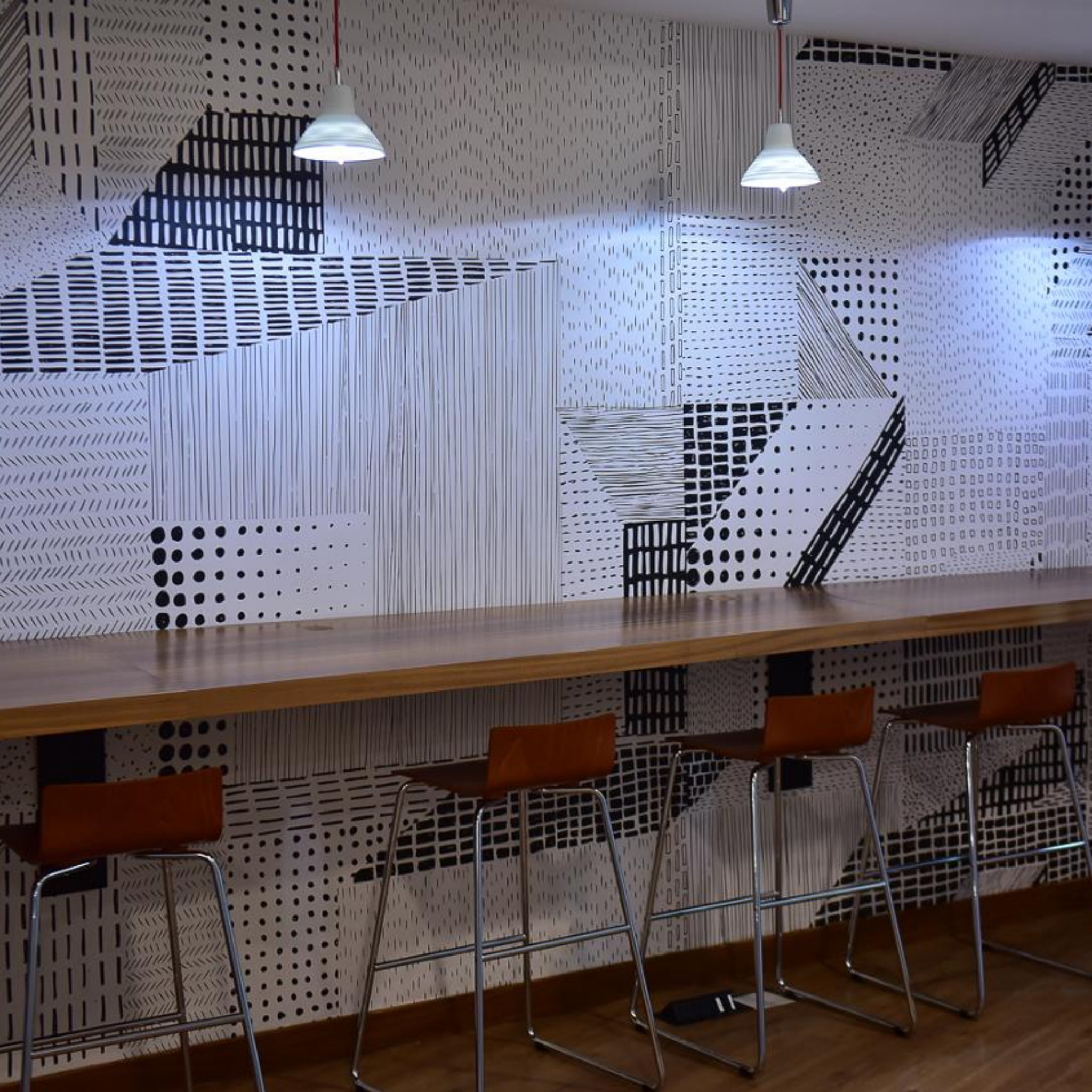
By creating Team Member owned subsidiaries, we reward performance, increase retention and ensure continuity and the preservation of institutional knowledge within the firm.

Our teams share resources such as office space, IT systems and warehousing and work as cross-functional teams on projects. This ensures constant engagement and the reliable exchange of information and knowledge required for excellent project delivery.

We have also built strong relationships with global suppliers and vendors in the services we do not own yet. This gives us better control over our project delivery timelines and ensures a consistent quality. Through local representation and exclusivity agreements, we work with reputable brands to maintain high standards and challenge ourselves to greater excellence.

This approach drives the delivery of excellence to our Team, Clients, Partners and the community at large.

## **VALUE CHAIN INTEGRATION**





KH3 GROUP LTD.

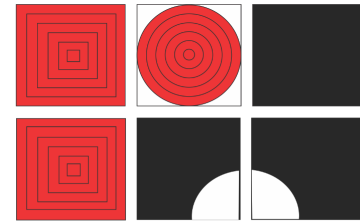


RAZOR  
+ KH3



RAZOR

ENGINEERING & CONSTRUCTION LTD.



rhayCAD

CHARTERED  
ARCHITECTS  
+  
PROJECT  
MANAGERS

khy  
/kai:/



PRODUKTS

# HOW

Razor.KH3 Limited is well known for our ability to provide **complete Design-Build Services** for building projects using our subsidiaries and partners. While we are unrivalled in Interior Design and Construction Services we are also very proficient in New Building Construction as well as Renovations.

In the Design-Build approach, the Client manages only one contract and therefore one point of accountability. The designer and contractor work as a collaborative from inception through project close-out and handover. This gives the Client unified Project Delivery Team that conserves valuable resources of time and money.

All Project challenges are tackled by the entire team, leading to **innovative problem-solving** and not excuses or blame-shifting.

Using this Project delivery approach, from pre-feasibility, design and planning, procurement, monitoring, project implementation and close-out, we have executed projects for **reputable clients such as Enterprise Group Limited, Align Technologies and Development Bank Ghana.**

## DESIGN-BUILD CONSTRUCTION





# HOW

Although we often work as a Design-Build (turnkey) Contractors, we also provide our **expertise as General Contractors** implementing the design of an independent architectural and engineering team.

**KH3 Group Limited and Razor Engineering & Construction** are the companies in the RKH3 Group that lead the General Contractor Services.

We rely on our in-house team of professionals as well as our rigorously vetted partner sub-contractors and artisans to safely and efficiently execute your designs and ideas. We work closely with your project manager, design and engineering professionals as well as any nominated sub-contractors to ensure **excellence in quality**.

We have provided our services for new residential and commercial building construction, commercial and retail interior fit-outs as well as residential and commercial renovations. Our clients include reputable brands like **Google, Oracle and Scantopia**.

## GENERAL CONTRACTOR SERVICES





# HOW

**Produkts Ghana Limited**, a subsidiary of the RKH3 family is a champion of our lofty vision. Through the installation of Carpets, Luxury Vinyl Tiles, Specialty Vinyl and Artificial Grass we are raising the bar in business excellence. Providing great customer experience and aesthetically pleasing solutions at great value for money.

We do so by refining and improving business practices that ensure we conserve our natural resources, we inspire growth in our team and transform our communities aesthetically. Taking the time to understand your needs we offer suitable solutions within your budget as a key part of this process.

Our partnership with Belgotex™ gives us access to construction and design professionals with a wealth of experience and extensive knowledge in design, construction and flooring installations.

Our service excellence has allowed us to deliver solutions for landmark projects such as SU Tower, 335 Place as well as reputable clients like Fidelity Bank Ghana Limited.



## SOFT FLOORING SUPPLY & INSTALLATION



# HOW

**KHY Business Limited** is the subsidiary of the Group that focuses on the supply and installation of Office Furniture and Joinery. Driven to be the Standard of Global Business Excellence in Africa, the KHY Team members are dedicated to understanding and meeting our clients' needs. We are cross trained and understand your projects in a holistic way.

We are not simply eager to install furniture, we want to work with you to bring your designs to life. We are inspired to create your beauty cost effectively through a remarkable client experience.

Working with designers and reputable brands like **Bene**, allows us to present solutions that make your work spaces efficient and functional. We use a wide range of office furniture products, to create space optimisation solutions that provide value for money without sacrificing quality or a pleasant user experience.

We have done this for organisations such as the **Development Bank of Ghana, Ghana Revenue Authority and Nsano Limited.**

khy  
/kai:/

**FURNITURE & JOINERY  
SUPPLY &  
INSTALLATION**



# HOW

Working with our in-house design team as well as rhayCAD and Razor, we transform our clients ideas into designs, buildings and spaces that respond to the needs of people and the environment.

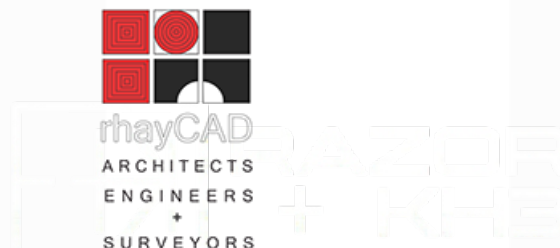
We design everything to be beautiful in simplicity and functionality while telling a story that connects our values and the values of the end users.

Our services include:

- **Architecture.**
- **Interior Design.**
- **Structural Engineering.**
- **Mechanical, Electrical and Wet Services Engineering.**
- **Project Cost Control Management.**

Our design partners have over 40years of experience across Africa and have played key roles in landmark projects such as the Pullman Airport City, The Central Bank of Liberia as well as the Accra Temple for the Church of Jesus Christ of Latter-Day Saints.

## ARCHITECTURAL & ENGINEERING SERVICES





Google

For nearly a decade, **Razor Engineering and Construction**, has forged partnerships with in-house facility managers and property managers to provide hassle-free **Facility Maintenance Services**.

We understand that proper building repair and maintenance services ensures the safety of building occupants and users, increases the buildings lifespan, reduces equipment failure and downtime and ultimately saves money for building owners and occupants.

Working closely with our Clients we examine your buildings and spaces, understand your goals, and develop comprehensive maintenance, service, and preventive maintenance strategy to protect your assets. Our experienced Team is adept at developing building and equipment specific maintenance plans that create and maintain asset value.

Our maintenance plans outline Daily Services, Periodic Preventative Services and Emergency Response Services. Our Service scope includes but is not limited to:

- **Maintenance of Power, IT & Security Infrastructure.**
- **Maintenance of HVAC Systems.**
- **Finishes, Furnishing & Furniture Maintenance.**
- **Cleaning & Sanitation Services.**

# HOW

## FACILITY MAINTENANCE SERVICES



Meet  
with My Google  
Video content

# WHAT

## **ERICSSON GHANA**

**RAZOR.KH3** as General Contractors

**SIZE**      **378 sqm | 2025**

## **GOOGLE COMMUNITY ENGAGEMENT HUB**

**RAZOR.KH3** as General Contractors

**SIZE**      **415 sqm | 2025**

## **MASTERCARD FOUNDATION ACCRA NEW OFFICE**

**RAZOR.KH3** as Design & Build Contractors

**SIZE**      **1807 sqm | 2024**

## **GOOGLE ACCRA OFFICE FIT-OUT, FIQ5**

**RAZOR.KH3** as GENERAL CONTRACTORS

**SIZE**      **925sqm | 2022**

## **DEVELOPMENT BANK GHANA OFFICE-FITOUT**

**RAZOR.KH3 & rhayCAD** as Design & Build Contractors

**SIZE**      **973sqm | 2021**

## **FLAGSHIP PROJECTS**



TUESDAY, 19 NOVEMBER  
4:14 PM  
MR-GH-Necromme-7

Available  
All day

Add this room to a meeting with your personal device

# WHAT

## **SUPPLY & INSTALLATION OF SOFT FLOORING FOR SU TOWER & 335 PLACE**

**KH3 PRODUKTS LTD** as Supply and Installation Vendors

**SIZE** 40,000 sqm

## **ENTERPRISE GROUP HEAD OFFICE FIT-OUT**

**KH3 & rhayCAD** as Design & Build Contractors

**SIZE** 1800sqm | 2019

## **FNB HEAD OFFICE FIT-OUT**

**KH3, Razor Engineering & rhayCAD** as Design & Build Contractors

**SIZE** 1098 sqm

## **GENERAL ELECTRIC HEAD OFFICE FIT-OUT**

**KH3 & rhayCAD** as General Contractors

**SIZE** 965sqm

## **FLAGSHIP PROJECTS**



# WHAT

## ERICSSON GHANA

**RAZOR.KH3** as General Contractors

**SIZE**      **378 sqm | 2025**

## GOOGLE COMMUNITY ENGAGEMENT HUB

**RAZOR.KH3** as General Contractors

**SIZE**      **415 sqm | 2025**

**2025  
PROJECTS**



# WHAT

## MASTERCARD FOUNDATION ACCRA NEW OFFICE

**RAZOR.KH3** as Design & Build Contractors

**SIZE** 1807 sqm | 2024

## GOOGLE CRASH DECK

**RAZOR.KH3** as General Contractors

**SIZE** 336 sqm | 2024

## HAPAG-LLOYD

**RAZOR.KH3** as Design & Build Contractors

**SIZE** 293 sqm | 2024

## YARA

**RAZOR.KH3** as Design & Build Contractors

**SIZE** 266 sqm | 2024

## NESTLE GHANA

**KHY** as Joinery & Furniture Supply and Installation Vendor

## 2024 PROJECTS



## ENS AFRICA

RAZOR.KH3 as Design & Build Contractors

SIZE 117 sqm | 2023

## EXPRO GULF

KH3 as Design & Build Contractors

SIZE 158 sqm | 2023

## ACCRA OFFICE FOR UHURU CAPITAL LTD

RAZOR.KH3 as Design & Build Contractors

SIZE 65sqm |2022

## BAKER HUGHES

RAZOR.KH3 as Design & Build Contractors

SIZE 245.73 sqm |2023

# WHAT

## 2023 PROJECTS



## **INTERIOR DESIGN & BRANDING UPGRADE FOR NOVA VESTA OFFICES, ACCRA.**

**KH3 GROUP LTD** as Full Service Vendor for the Client

**SIZE** 110sqm |2022

## **SUPPLY & INSTALLATION OF SOFT FLOORING FOR FIDELITY BANK, GHANA**

**KH3 PRODUKTS LTD** as Supply and Installation Vendors

**SIZE** 1400sqm |2022

## **STANBIC HEIGHTS RECEPTION**

**RAZOR.KH3** as Design & Build Contractors

**SIZE** 65sqm |2022

## **FNB KEJETIA BRANCH FURNITURE INSTALLATION**

**KHY as** Joinery & Furniture Supply and Installation Vendor

**SIZE** 200sqm | 2022

# WHAT

## 2022 PROJECTS



# WHAT

## **NORFUND WEST-AFRICA**

**RAZOR.KH3** as Design & Build Contractors

**KH3 PRODUKTS LTD** as Supply and Installation Vendors

**SIZE**      **200sqm |2022**

## **ACCRA OFFICE FOR ALIGN TECHNOLOGY COMPANY LTD**

**RAZOR.KH3** as Design & Build Contractors

**SIZE**      **200sqm |2022**

## **DESIGN & CONSTRUCTION OF ROOFTOP RECREATIONAL AREA FOR SAM OKUDZETU & ASSOCIATES**

**RAZOR.KH3** as Design & Build Contractors

**SIZE**      **150sqm | 2022**

## **2022 PROJECTS**



We are B.I.L.D.E.R.S. A family of ordinary people developing ourselves into beautiful people by creating beautiful things & environments through a beautiful stakeholder experience. In this way we become “The Standard of Business Excellence in Africa.”

## WHO

The KH3 Group & Razor family believe every vendor, artisan, supplier, and consultant, contracted under all projects are part of our team. We have a network of over 400 vendors, artisans, suppliers and consultants that we engage periodically on our projects. We would like to introduce you to all of them. However, in this profile we are only able to introduce the core members that represents KH3 & Razor’s full-time permanent team.”



*The KH3 Group Strategy Team*

# WHO

**Kweku** brings a wealth of experience in project design and management, business development management, client relationship management and business logistics. Over the past 20 years, he has worked extensively in these areas with Avaya Inc., the United States Army, rhayCAD Limited as well as KH3 Limited. He is currently the Head, KH3 Group as well as the Director, Strategy and Business Development for the Joint Venture initiative masterminded Ernest Larmie, Hanetta Hayford and himself.

In 2017, he spearheaded the strategy that formed the KH3 Group. Bringing together three independent enterprises in fit-out industry he led the firms to collaborate and share both human resource and physically assets including office and workshop space. This allowed the KH3 Group to provide more services within the interior design and build value chain.

In April 2014, Kweku setup KH3 Limited to meet the increasing demand by clients to execute projects on a turnkey basis. In the same year the company secured and successfully executed major office fit-out projects with FirstRand Bank of South Africa as well as Roche Products Ghana Limited. His work experience has taken him to various States in the U.S.A., Kuwait, Afghanistan, Liberia, Sierra-Leone, the U.A.E, and South-Africa. He has built an extensive network of contacts, suppliers, consultants and contractors around the world.

As a seasoned Director and Business Manager of rhayCAD, he had a leading project role in various notable projects. He has also supervised a team of consultants responsible for the role-out of several Stanbic bank branches and a few centres for The Church of Jesus Christ of Latter-Day Saints. His notable projects as the Business Manager & Projects Director include the Stanbic Heights fit-out for Stanbic Bank Limited, General Electric Head Office fit-out as well as the Accra Financial Centre fit-out for ADB.

**kweku HAYFORD**

**DIRECTOR, STRATEGY**



# WHO

Between 2011 and 2015, Kweku planned, directed, and managed rhayCAD Limited's resources to obtain an increased turnover by more than 100% in 3 years. He drove the acquisition of new reputable corporate clients and new projects. His efforts secured major clients for rhayCAD including MTN, Stanbic Bank, General Electric Ghana as well as Standard Chartered Bank. He managed the firm's transition from an architectural enterprise to a three-country limited liability company while reducing existing long-term liabilities and increasing assets. He also led in establishing the Fit-out division of rhayCAD and the spin-off to KH3 Limited.

With the U.S. Army from 2007 to 2011, Kweku was accountable for military equipment worth \$147,000, an experience that brought him a rich proficiency in project logistics. From 2004 to 2007 with rhayCAD Limited, he engineered a significant increase in both the client base and turnover.

Kweku and his leadership team are currently enrolled in the Stanford SEED Transformation Program. A year long program run by Stanford University to help SME business owners in Africa and Southeast Asia scale up their businesses.

He was educated at U.S. Army Logistician (QM) School and Basic Combat Training, Fort Lee Virginia, U.S.A. From September, 2007–February, 2008, where he was a U.S. Distinguished Honour Graduate, Student First Sergeant, & Platoon Guide. In December 2003, Kweku received a BSc. in Business Administration at Miami University of Ohio in Ohio, U.S.A.

Kweku is married to Hanetta Hayford and has two sons.

**kweku HAYFORD**

**DIRECTOR, STRATEGY**



Enterprise  
Market

Enterprise  
Market

Enterprise  
Market

Enterprise  
Market

Enterprise  
Market

Enterprise  
Market

# WHO

Yayra is the Strategic Head, Finance & Administration of KH3 Group. As part of the 5 member Executive Team, she has been successful in the uninterrupted financing of projects valued at over \$3M.

As the Head of Finance and Administration of KH3, Yayra serves as a strategic partner to the Strategy Team of the firm. Her core functions include developing and implementing financial and administrative strategies, policies and processes. She is a meticulous, detailed oriented leader who leads project teams in the areas of financing, value engineering and budgeting. She has successfully overseen the financial management of over 50 projects valued at a total of GHC 75M. Notable among these Projects are the Accra Office Fit-out for Google Ghana Limited, The Head Office Fit-out for Enterprise Group Limited and The Head Office Fit-out for FNB Bank Ghana Limited. Yayra also has extensive experience as a Project Manager on full service interior design and build projects.

Through her career experience, Yayra has demonstrated her versatility in occupying varied roles and rising to the challenge consistently. She worked with Fauzia in 2019 to set-up KHY Furniture, the furniture supply and installation unit of KH3 Group. She led KHY as the CEO through a challenging epidemic growing revenues of the firm to GHC 3M in 2021.

**d. yayra NUMETU**

FINANCE & ADMIN. HEAD



# WHO

In 2014 she played a key role in establishing KH3 as a spin-off from rhayCAD Chartered Architects and Project Managers. She managed a budget of over GHC 3M to ensure an effective transition. Between September 2011 and April 2014 worked in various roles at rhayCAD. Starting out as an intern she assisted the Business Manager with HR, Finance and Marketing functions. During this period she was instrumental in preparing proposals that helped win clients such Standard Chartered Bank and The Church of Jesus Christ of Latter-Day Saints. Her acumen for finance become apparent and she took on a role as a Finance Assistant from which she rose to become the Finance Supervisor. In these roles, she worked with external consultants to track, disburse and and record all of the firm's financial transactions from Projects such as the Central Bank of Liberia and various projects for Standard Chartered Bank.

She also worked as a Research Assistant at the Parliament House of Ghana from January 2010 to December 2011 where her responsibilities included conducting research on relevant issues that enhanced the work of parliament.

Yayra has a M.Sc. in Finance at the Ghana Technology University College in Accra, Ghana. In May 2012, she was awarded a B.Sc. in Marketing at the Ghana Institute of Management and Public Administration in Accra, Ghana.

Yayra is married and has two sons.

**d. yayra NUMETU**

**FINANCE & ADMIN. HEAD**



# WHO

In 2014 she played a key role in establishing KH3 as a spin-off from rhayCAD Chartered Architects and Project Managers. She managed a budget of over GHC 3M to ensure an effective transition. Between September 2011 and April 2014 worked in various roles at rhayCAD. Starting out as an intern she assisted the Business Manager with HR, Finance and Marketing functions. During this period she was instrumental in preparing proposals that helped win clients such Standard Chartered Bank and The Church of Jesus Christ of Latter-Day Saints. Her acumen for finance become apparent and she took on a role as a Finance Assistant from which she rose to become the Finance Supervisor. In these roles, she worked with external consultants to track, disburse and and record all of the firm's financial transactions from Projects such as the Central Bank of Liberia and various projects for Standard Chartered Bank.

She also worked as a Research Assistant at the Parliament House of Ghana from January 2010 to December 2011 where her responsibilities included conducting research on relevant issues that enhanced the work of parliament.

Yayra has a M.Sc. in Finance at the Ghana Technology University College in Accra, Ghana. In May2012, she was awarded a B.Sc. in Marketing at the Ghana Institute of Management and Public Administration in Accra, Ghana.

Yayra is married and has two sons.

**miranda LARYEA**

**BUSINESS DEVELOPMENT MANAGER**





# WHO



francis **OPARE**

Finance Officer



andrews **KORTEÝ. A.G.I.A.**

Project Design Coordinator



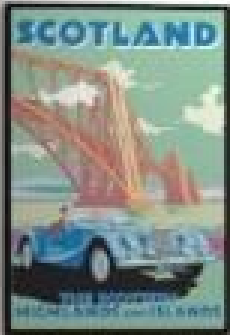
Michael **LARTEY**

Project Coordinator



helena ntiri **AMANKWAH**

Procurement Specialist



CHILL



# WHO



dorothea **ADJETEY**  
Operations & Branding Officer



libby-roselyn **ANDERSON**  
Business Development Officer



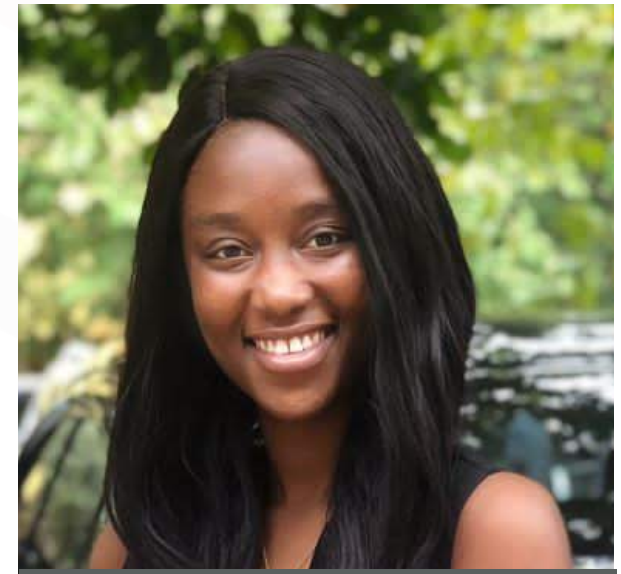
amma **KUMI**  
Asst. Quantity Surveyor



niniwa **OFFEI**  
Finance Assistant



rebecca **SAM**  
Finance Assistant



sitsofe **ASAFO**  
Executive Assistant



# WHO



joyleen **THEYSON-COFIE**

Asst. Project Design Coordinator



ivan **YAWSON-SACKEY**

Asst. Project Design Coordinator



albert **ANKU**

Graphic Designer & 3D Visualiser



daniel **THOMPSON**

Asst. Project Coordinator



ben **WILSON-YEBOAH**

Clerk of Works



richmond **ADU OKYERE**

Marketing & Branding Assistant



# CONTACT PERSON

MIRANDA LARYEA

+233 242 264 264

[miranda@kh3group.com](mailto:miranda@kh3group.com)

welcome to the *b*eautiful experience . . .